

AMBILL® smart link

Wireless M-Bus Converter

Application

AMBILL® smart link integrates quickly your wireless meters (wireless M-Bus / OMS) to an M-Bus master. Parameters are configured wirelessly or via M-Bus and are changeable at any time, even after commissioning, without requiring direct intervention in the installation.



Features

- Converts wireless M-Bus (EN 13757-4 / OMS to wired M-Bus (EN 13757-3)
- Supports M-Bus protocols for electricity, water, gas and heat meters
- Supports the Advanced Encryption Standard (AES) with individual keys
- Bidirectional communication unit
- M-Bus powered
- Useable with all M-Bus masters

Your benefits

- Meter reading without accessing measuring points
- Direct reading of wireless meters (electricity, water, gas, and heat) on an M-Bus master (such as AMBUS® Net)
- Easy commissioning via USB transceiver wirelessly or via M-Bus
- Easy wall-mount installation

Product Range

AMBILL® smart link



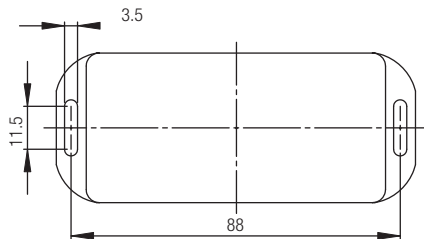
USB transceiver



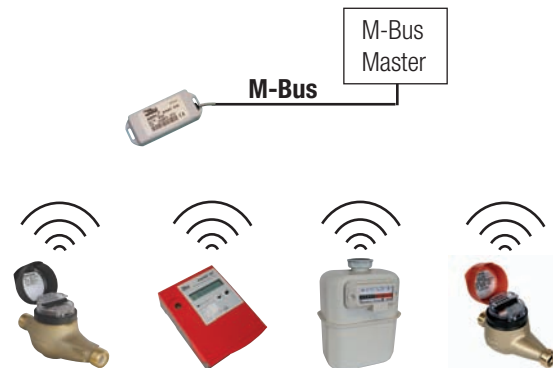
Technical Data

AMBILL® smart link	Art. No. 80657
M-Bus	
Baud rate	2400 baud
Primary address	1 - 250, programmable
Secondary address	Meter number (8 numeric characters)
Number of meters	4
Radio transmission	
Wireless M-Bus	EN 13757-4 mode T1/T2
Radio frequency	868 MHz band
Range	200 m (depending on environment)
Supply	
M-Bus powerd	7 M-Bus device loads
Additional data	
Dimensions (w x h x d)	96.3 x 40 x 15 mm
Temperature	-20 to +50 °C
Protection class	IP 54, no condensation
Mounting	Screw-mounted
Connection	0.5 m 2-wire cable
Parameterization	via M-Bus or USB transceiver / Software included
USB transceiver for parameterization	Art. No. 80658

Dimensions



Typical application



SALES PARTNER:

HEAD OFFICE:

AQUAMETRO AG
 Ringstrasse 75
 CH-4106 Therwil
 Phone +41 61 725 11 22
 Fax +41 61 725 15 95
 info@aquametro.com



www.aquametro.com