



QALCOSONIC W1

← DN15, DN20, DN25, DN32, DN40



WWW

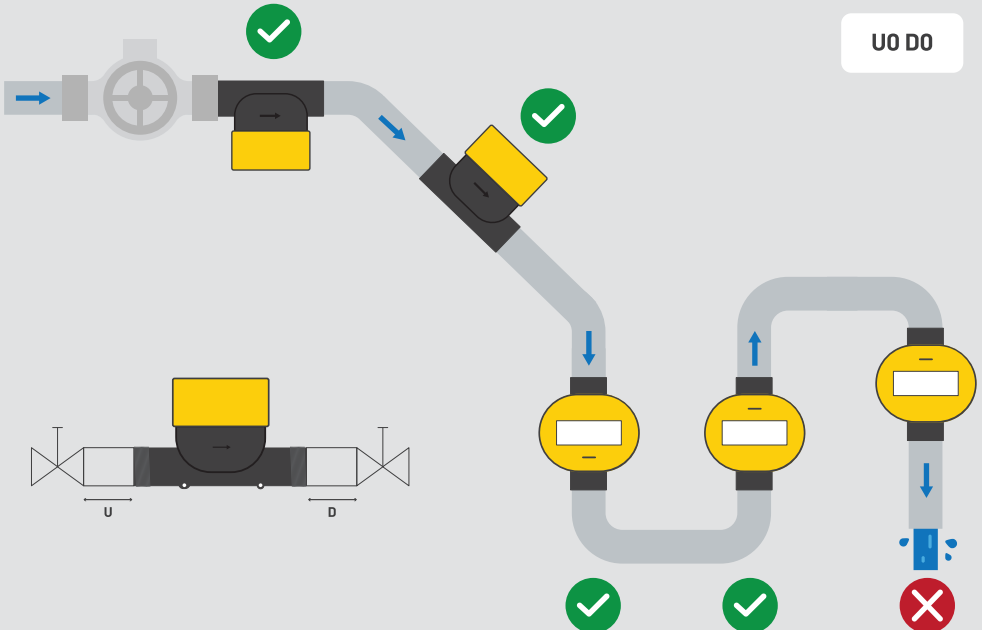
✓ 🔥 ❄️ ISO 4064-1-2017

✓ 🔨 M1
2014/32/UE

✓ ⚙️ E1 / E2
ISO 4064:2014
2014/32/EU



UO DO

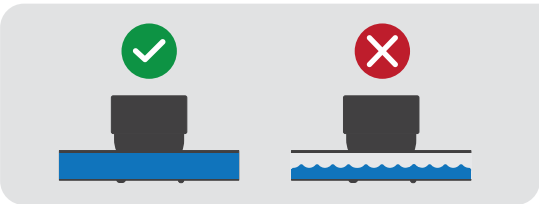


T30 max 30°C
T90 max 90°C
(33 F ... 194 F)

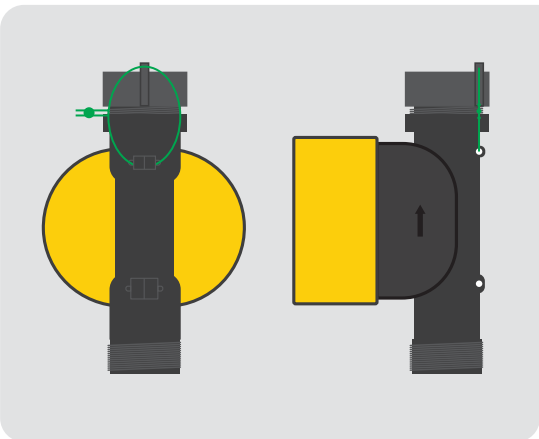
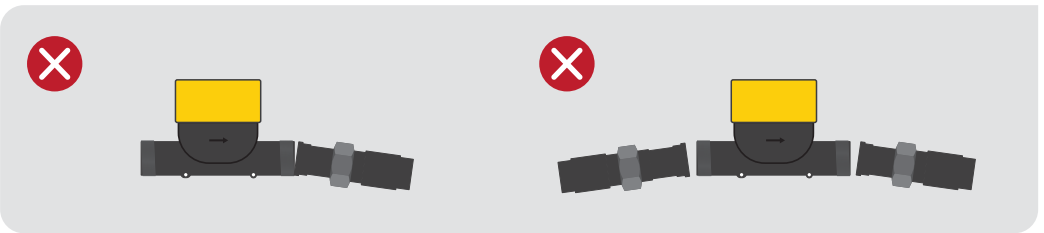
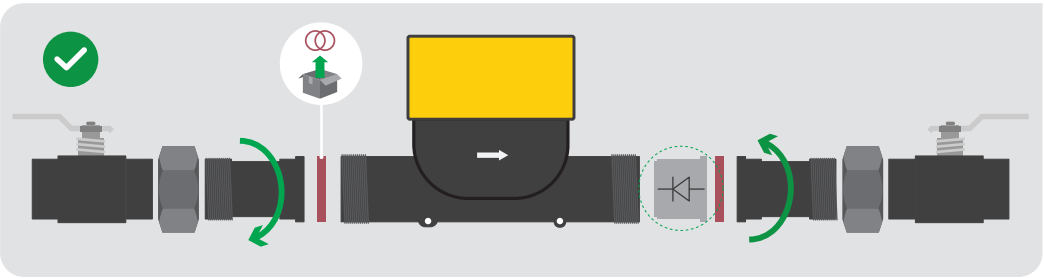
Max 16 bar
(Max 260 psi)

-15°C...+70°C
-59 F...+158 F

UV



DN15	DN20	DN25	DN32	DN40
27 mm	31 mm	41 mm	49 mm	55 mm
30 Nm	35 Nm	40 Nm	40 Nm	40 Nm



000000.000 m³
00000 m³/h

10 l
(3 GAL)

000000.0 10 m³
00000 m³/h

↑

Ⓜ